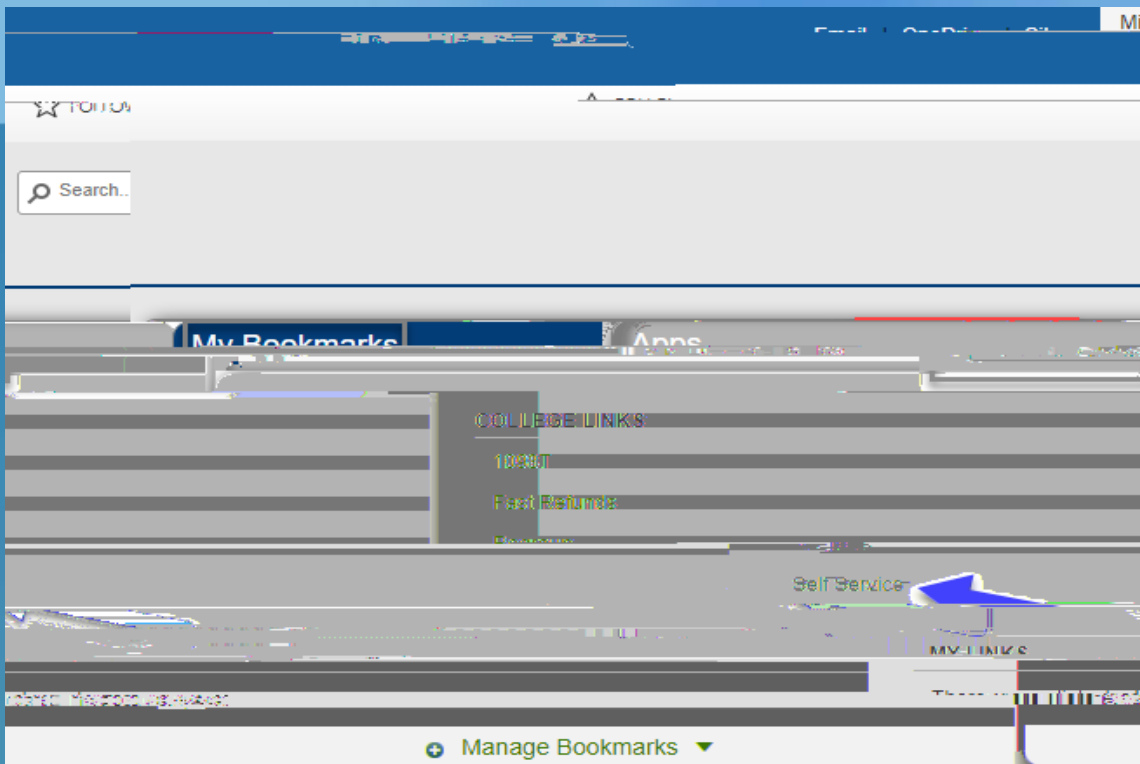






HELPDESK

402-437-2447
helpdesk@southeast.edu



402-437-2447

helpdesk@southeast.edu

HELPDESK



HELPDESK

402-437-2447
helpdesk@southeast.edu



402-437-2447
helpdesk@southeast.edu

HELPDESK

The screenshot displays the MyNet portal for Southeast Community College. At the top, there are logos for 'melnet', 'Fenañni', and 'Customer Service'. The main header includes the college name 'Southeast COMMUNITY COLLEGE'. Below this, there are navigation tabs for 'Plan & Billing' and 'Payment P...'. The central area shows a 'Current Balance' of '\$0.00' and a 'Transaction Details' link. There are also links for 'Register to receive text services on your mobile phone' and 'Add an Authorized Party'. The footer contains contact information: '209 v19.10.11211.11140' and 'Customer Service | Terms of...'. The page is set against a dark blue background with a grid pattern.

402-437-2447
 helpdesk@southeast.edu

HELPDESK